

HC-B 24-SMQ-67/M1PG21

Order No.: 1771969

<http://eshop.phoenixcontact.de/phoenix/treeViewClick.do?UID=1771969>

Box mounting base, with double locking latch, height 67 mm, with screw connection, 1x Pg21

Commercial data

EAN	4017918036645
Pack	10 Pcs.
Customs tariff	76169910
Weight/Piece	0.45311 KG
Catalog page information	Page 413 (PC-2007)

Product notes

WEEE/RoHS-compliant since:
03/01/2006



<http://www.download.phoenixcontact.com>
Please note that the data given here has been taken from the online catalog. For comprehensive information and data, please refer to the user documentation. The General Terms and Conditions of Use apply to Internet downloads.

Technical data**General data**

Design	B24
Height	67 mm
Width	57 mm
Length	144 mm
Housing type	Box mounting bases

Type of the screw connection	1x Pg21
Pg screw connection	With
Wrench size, union nut	28 mm
External cable diameter	10 mm ... 19 mm
Degree of protection	IP65
Ambient temperature (operation)	-40 °C ... 125 °C
Housing material	Aluminum, die-cast
Housing surface material	Powder-coated, gray
Seal material	NBR
Screw connection material	Nickel-plated brass
Cable seal material	NBR
Locking latch material	High-grade steel, handle: PA-GF
Material grip body interlock	PA-GF

Certificates / Approvals

Approval logo

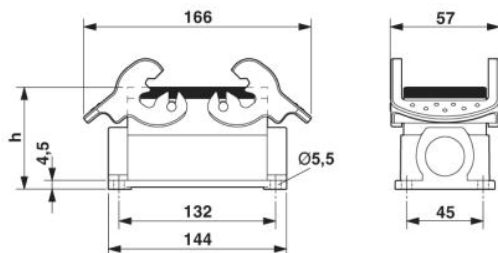


requested approbations

Certification	GOST
---------------	------

Drawings

Dimensioned drawing



Address

PHOENIX CONTACT GmbH & Co. KG
Flachsmarktstr. 8
32825 Blomberg, Germany
Phone +49 5235 3 00
Fax +49 5235 3 41200
<http://www.phoenixcontact.de>



© 2008 Phoenix Contact
Technical modifications reserved;